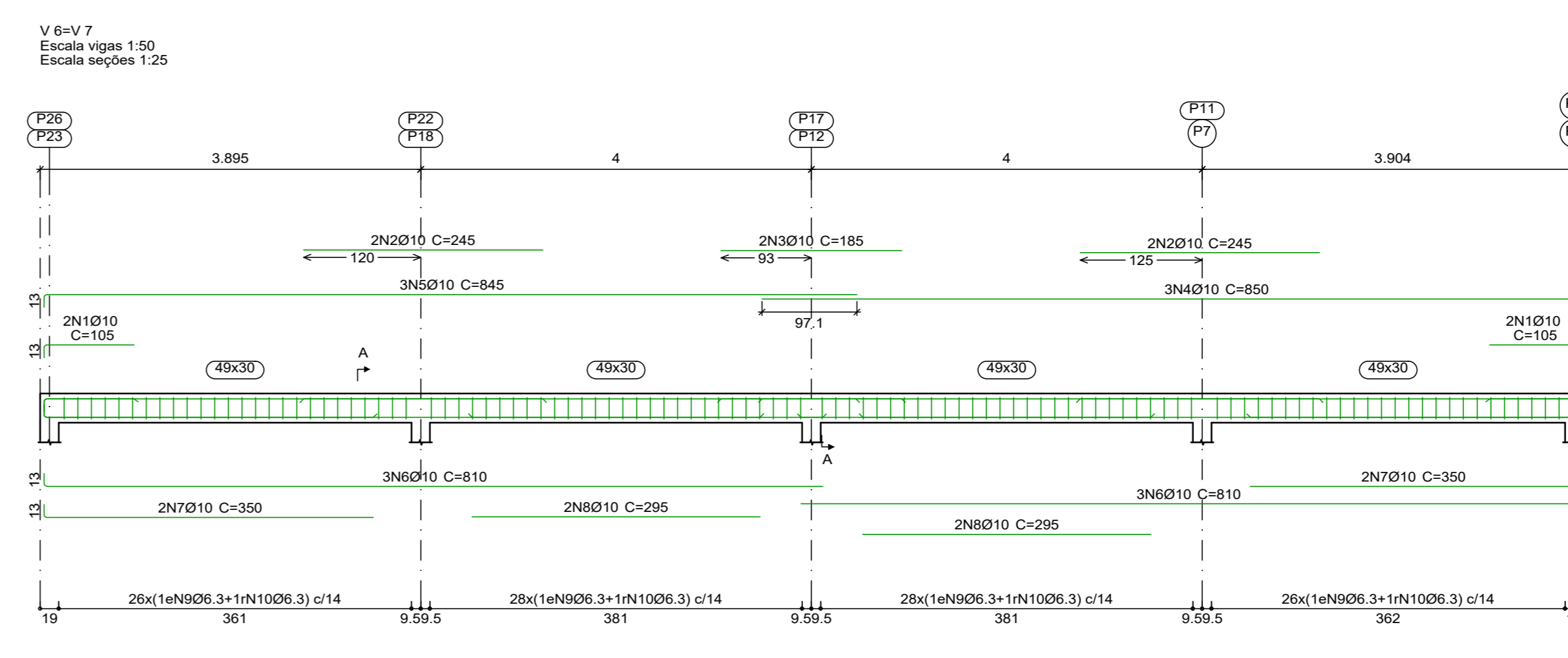
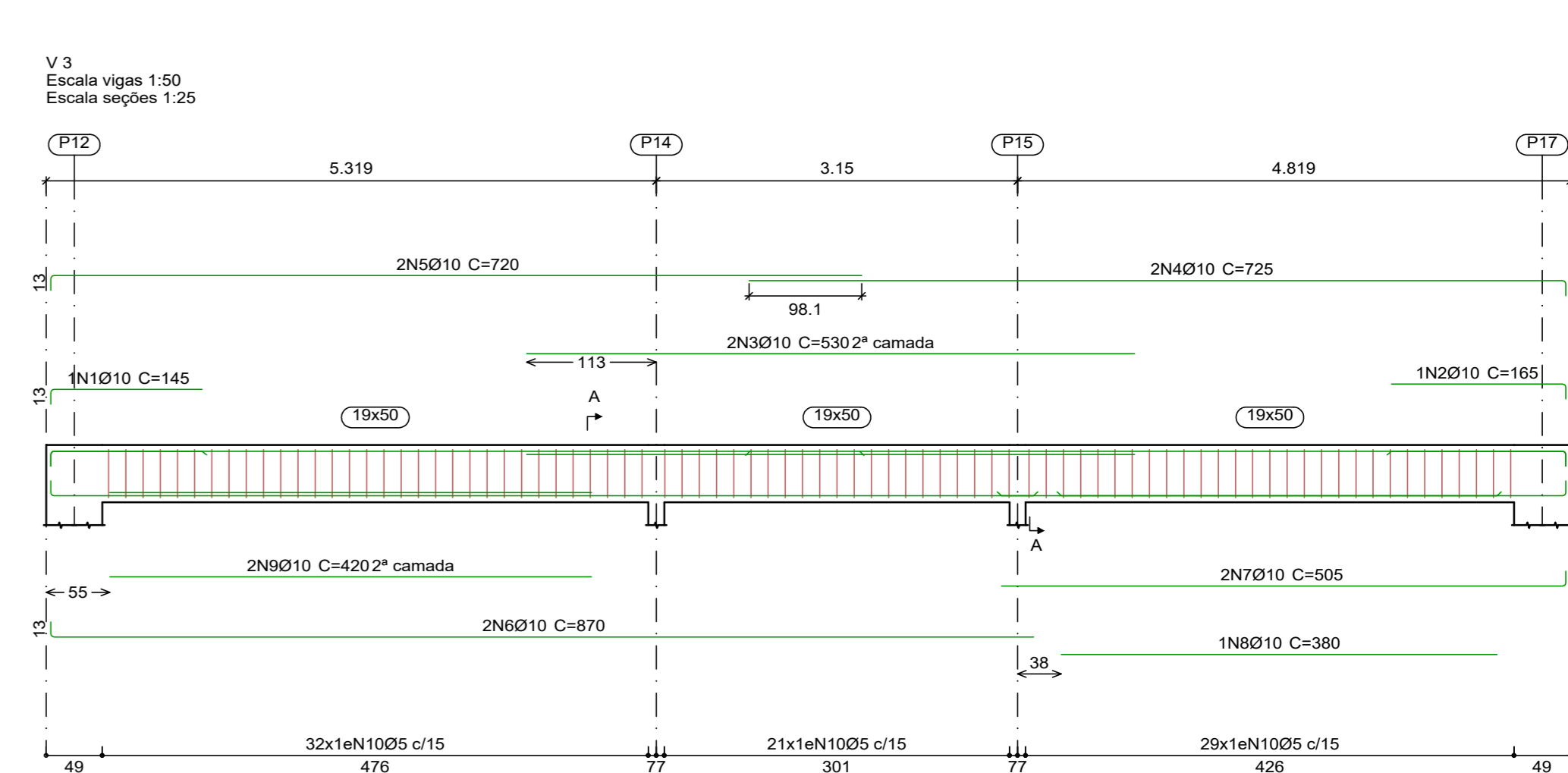
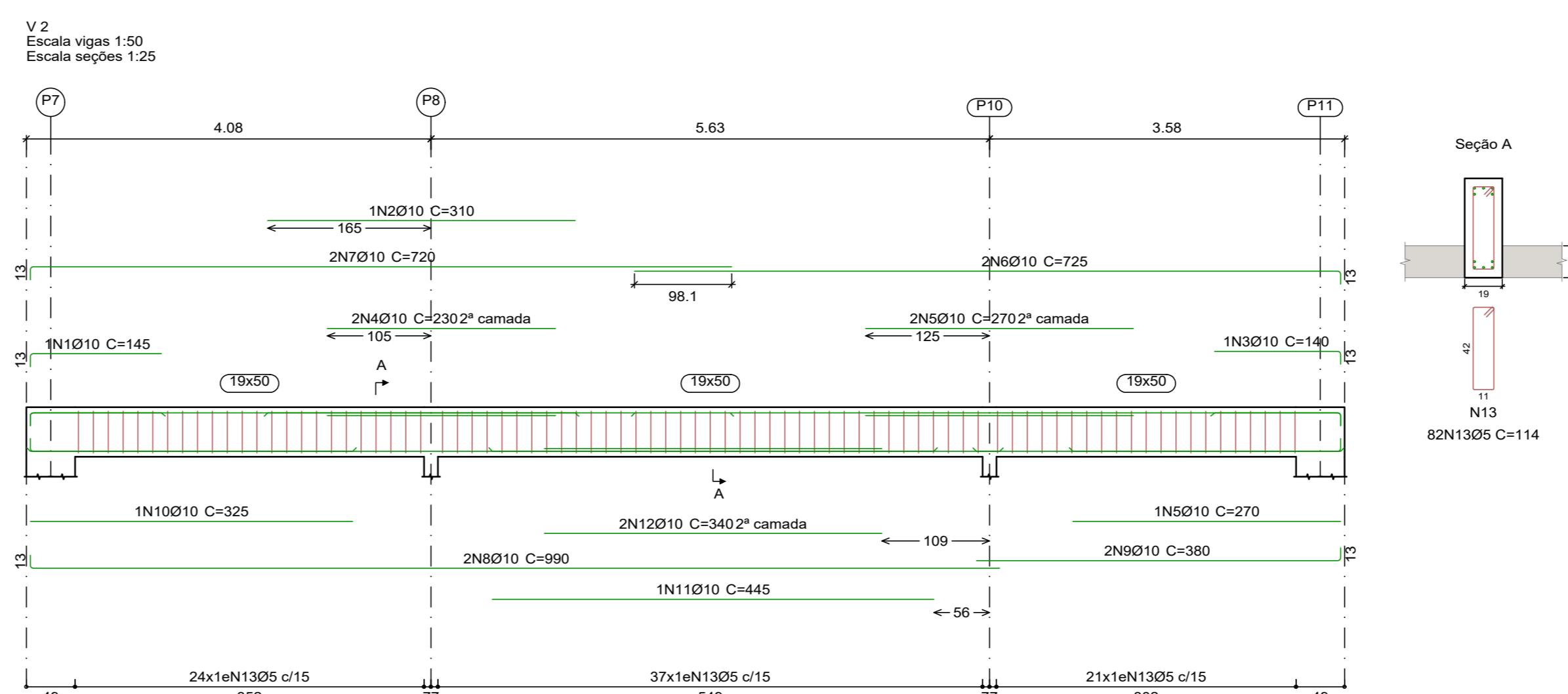
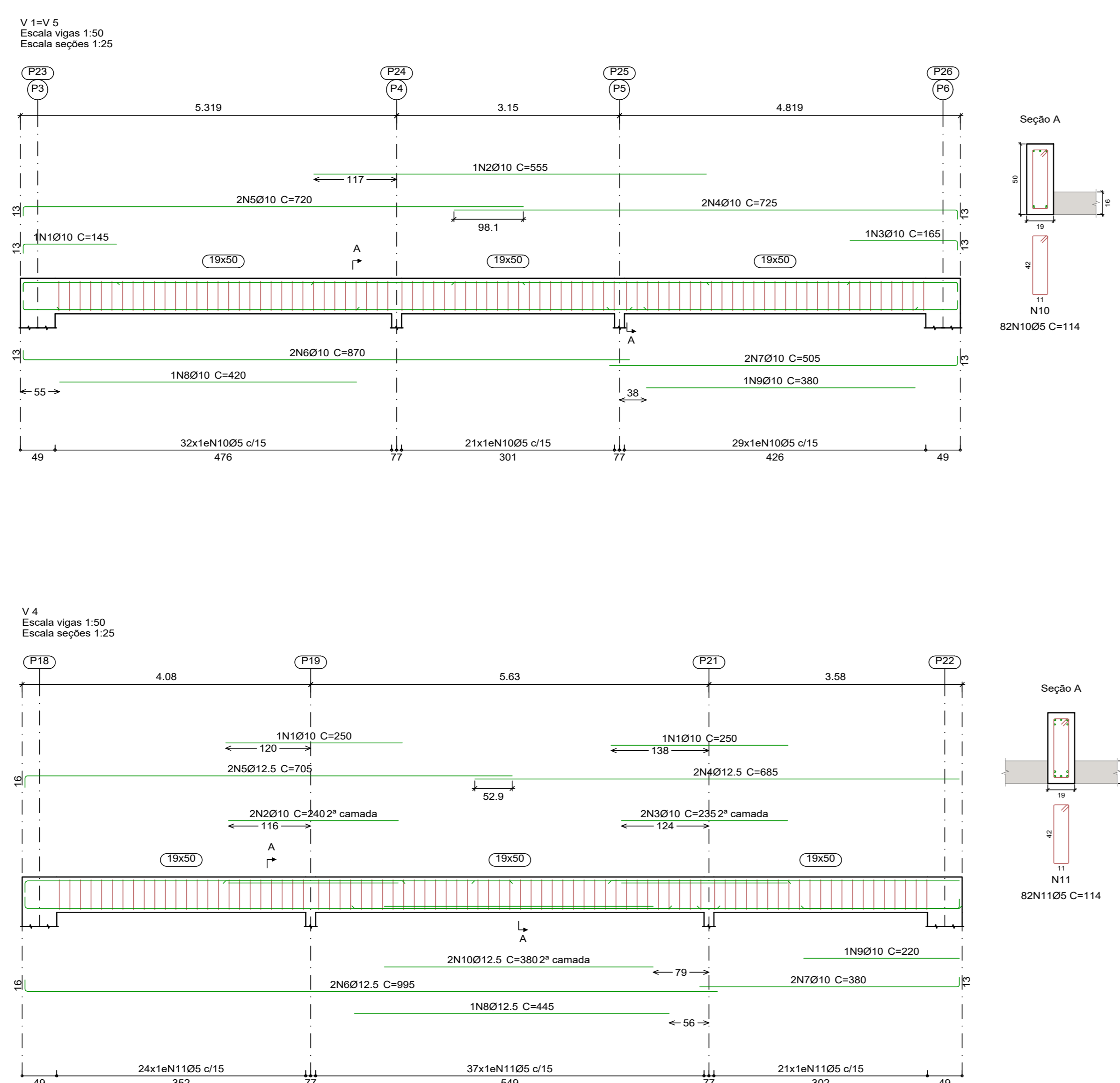


Elemento	Pos.	Diam.	Q.	Esquema (cm)	Comp (cm)	Total (cm)	CA-50 (kg)	CA-60 (kg)
P5	1	Ø10	4	365	355	1420	8.8	
	2	Ø5	30		65	1900		3.1
					Total+10%	9.7	3.4	
P7-P11-P12-P17-P18-P22	1	Ø10	6	365	355	2130	13.1	
	2	Ø5	30		113	3390		5.3
	3	Ø5	30		23	690		1.1
					Total+10%	14.4	7.0	
P14	1	Ø10	6	365	355	2130	13.1	
	2	Ø5	30		65	1950		3.1
	3	Ø5	30		18	540		0.8
					Total+10%	14.4	4.3	
P15	1	Ø10	4	365	355	1420	8.8	
	2	Ø5	30		65	1900		3.1
					Total+10%	9.7	3.4	
P19	1	Ø10	6	365	355	2130	13.1	
	2	Ø5	30		85	2550		4.0
	3	Ø5	30		18	540		0.8
					Total+10%	14.4	5.3	
P25	1	Ø10	4	365	355	1420	8.8	
	2	Ø5	30		65	1900		3.1
					Total+10%	9.7	3.4	
P3-P6-P23-P26	1	Ø10	6	365	355	2130	13.1	
	2	Ø6.3	36		113	4068		10.0
	3	Ø6.3	36		23	828		2.0
					Total+10%	27.6	14.0	
P4-P24	1	Ø10	4	365	355	1420	8.8	
	2	Ø5	30		65	1900		3.1
					Total+10%	9.7	3.4	
P8	1	Ø10	8	365	355	2940	17.5	
	2	Ø5	30		65	1900		3.1
	3	Ø5	60		18	1080		1.7
					Total+10%	19.3	5.3	
P10	1	Ø10	6	365	355	2130	13.1	
	2	Ø6.3	30		65	1950		4.8
	3	Ø6.3	30		18	540		1.3
					Total+10%	21.1		
P21	1	Ø10	6	365	355	2130	13.1	
	2	Ø5	30		85	2550		4.0
	3	Ø5	30		18	540		0.8
					Total+10%	14.4	5.3	
					Ø5:	0.0	78.2	
					Ø6.3:	0.0	39.5	
					Ø10:	328.4	0.0	
					Total:	328.9	78.2	

Elemento	Pos.	Diam.	Q.	Esquema (cm)	Comp (cm)	Total (cm)	CA-50 (kg)	CA-60 (kg)
V1=V5	1	Ø10	1	130	145	145	0.9	
	2	Ø10	1	130	555	555	3.4	
	3	Ø10	1	130	165	165	1.0	
	4	Ø10	2	130	725	1450	8.9	
	5	Ø10	2	24	720	1440	8.9	
	6	Ø10	2	80	870	1740	10.7	
	7	Ø10	2	80	505	1010	6.2	
	8	Ø10	1	380	420	420	2.6	
	9	Ø10	1	380	380	380	2.3	
	10	Ø5	82		114	9348		14.7
					Total+10%	60.4	16.2	
V2	1	Ø10	1	130	145	145	0.9	
	2	Ø10	1	130	310	310	1.9	
	3	Ø10	1	130	140	140	0.9	
	4	Ø10	2	130	230	460	2.8	
	5	Ø10	3	225	270	810	5.0	
	6	Ø10	2	72	725	1450	8.9	
	7	Ø10	2	24	720	1440	8.9	
	8	Ø10	2	80	950	1900	12.2	
	9	Ø10	2	80	380	760	4.7	
	10	Ø10	1	380	325	325	2.0	
	11	Ø10	1	445	445	445	2.7	
	12	Ø10	2	380	340	680	4.2	
	13	Ø5	82		114	9348		14.7
					Total+10%	60.6	16.2	
V3	1	Ø10	1	130	145	145	0.9	
	2	Ø10	1	130	165	165	1.0	
	3	Ø10	2	130	530	1060	6.5	
	4	Ø10	2	130	725	1450	8.9	
	5	Ø10	2	24	720	1440	8.9	
	6	Ø10	2	80	870	1740	10.7	
	7	Ø10	2	80	505	1010	6.2	
	8	Ø10	1	380	380	380	2.3	
	9	Ø10	1	420	420	420	2.6	
	10	Ø5	82		114	9348		14.7
					Total+10%	55.7	16.2	
V4	1	Ø10	2	280	250	500	3.1	
	2	Ø10	2	280	240	480	3.0	
	3	Ø10	2	280	235	470	2.9	
	4	Ø12.5	2	280	685	1370	13.2	
	5	Ø12.5	2	280	705	1410	13.6	
	6	Ø12.5	2	280	905	1810	19.2	
	7	Ø10	2	380	380	760	4.7	
	8	Ø12.5	1	445	445	445	4.3	
	9	Ø10	1	320	220	220	1.4	
	10	Ø12.5	2	380	380	760	7.3	
	11	Ø5	82		114	9348		14.7
					Total+10%	80.0	16.2	
V6=V7	1	Ø10	4	30	105	420	2.6	
	2	Ø10	4	280	245	980	6.0	
	3	Ø10	2	180	185	370	2.3	
	4	Ø10	3	82	850	2550	15.7	
	5	Ø10	3	820	845	2535	15.6	
	6	Ø10	6	260	810	4860	29.9	
	7	Ø10	4	350	350	1400	8.6	
	8	Ø10	4	280	295	1180	7.3	
	9	Ø6.3	106		136	14688	36.0	
	10	Ø6.3	106		34	3672	9.0	
					Total+10%	146.3	60.0	
					Ø5:	0.0	81.0	
					Ø6.3:	0.0	39.0	
					Ø10:	405.3	0.0	
					Ø12.5:	63.4	0.0	
					Total:	507.7	81.0	



QUADRO DE REVISÕES		
nº	Descrição	Responsável

ATHAC PROJETA
 Prefeitura da Estância Balneária de Bertoga - Secretaria de Obras e Habitação
 Implantação de Infraestrutura Urbana e Turística - Orla Central
 Contrato nº 52/2021
 Avenida Vicente de Carvalho e Henrique Costabile - Centro - Bertoga - SP
 Escala: 1:50
PROJETO EXECUTIVO - ESTRUTURA
WC - PARQUE DOS TUPINIQUEUS - ARMAÇONS - COBERTURA
 Responsáveis Técnicos: AT1 - AC P10/P10
 Proj: Luciano M. Toledo Ferragut - CREIA nº 091817/103
 Arq: Maria Valéria Fischer Nolas - CAU nº A.5288.6
 Nome Arquivo CAD: RENAN PROVENZI NICOLAO - CREA nº 509608671-SP
 Data: Jul/2022
 Desenho: AT1-211-EST-WCPT-007
 Folha:
 IMC:
 Nº ART ou RRT:
 AT1 - REG. CAU nº 2279254-4
 Insp: Inspiral - Arte, Cultura e Comunicação Ltda.
 AT1 - REG. CREA nº 1992918-4
 Inspiral - Arte, Cultura e Comunicação Ltda.
 AT1 - REG. CREA nº 1992918-4
 PE/EST 07/07