

VB12

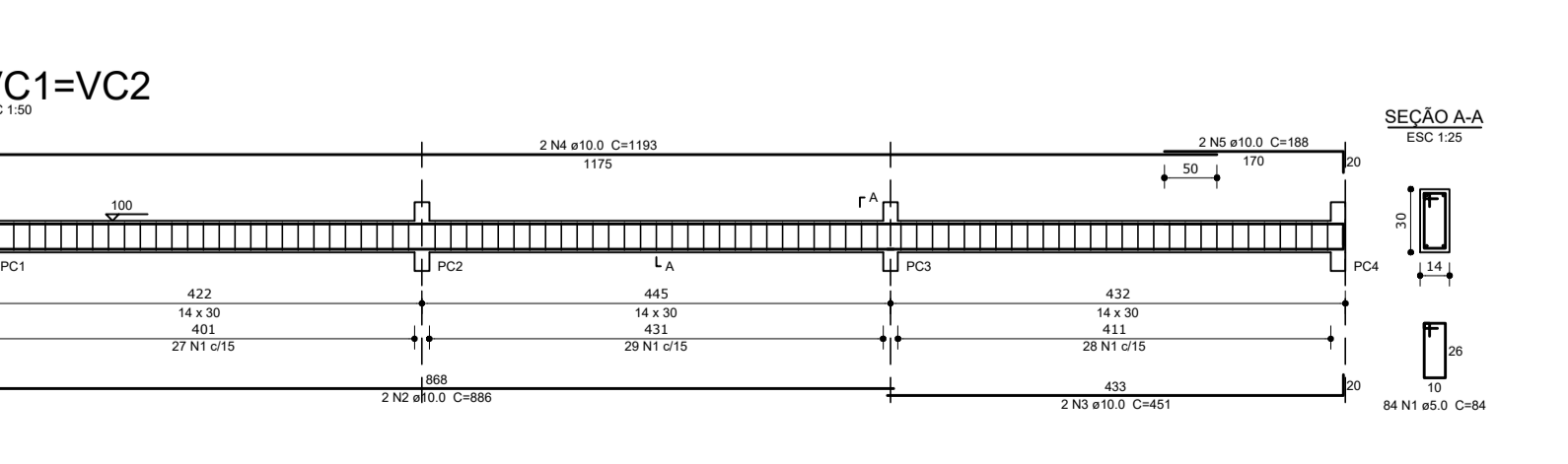
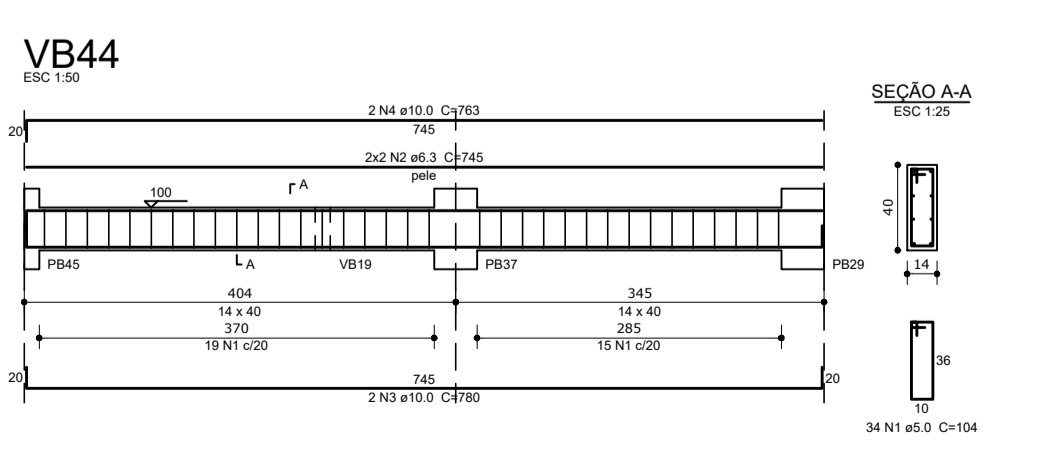
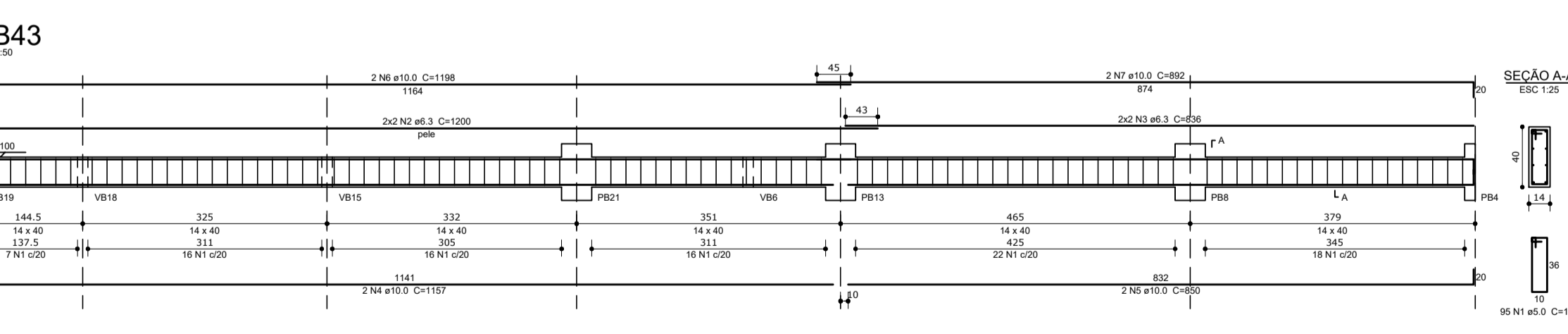
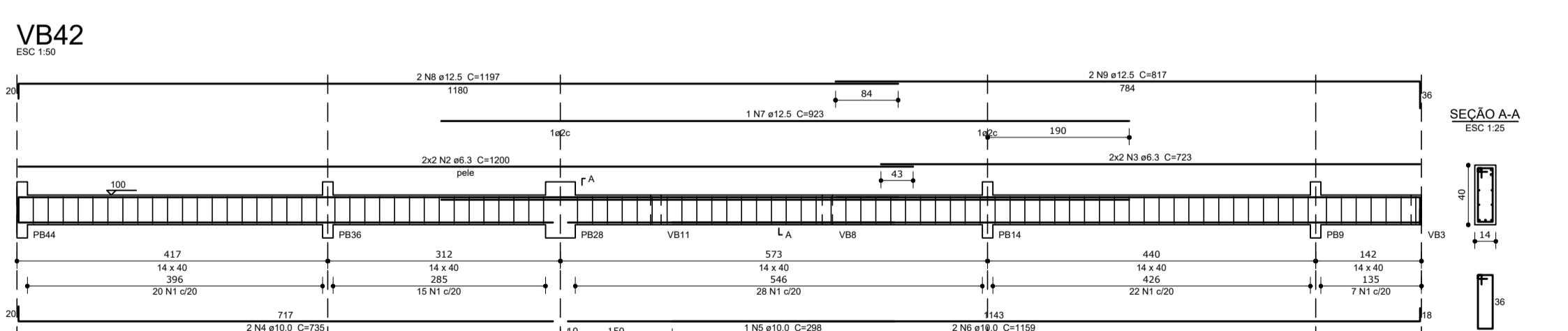
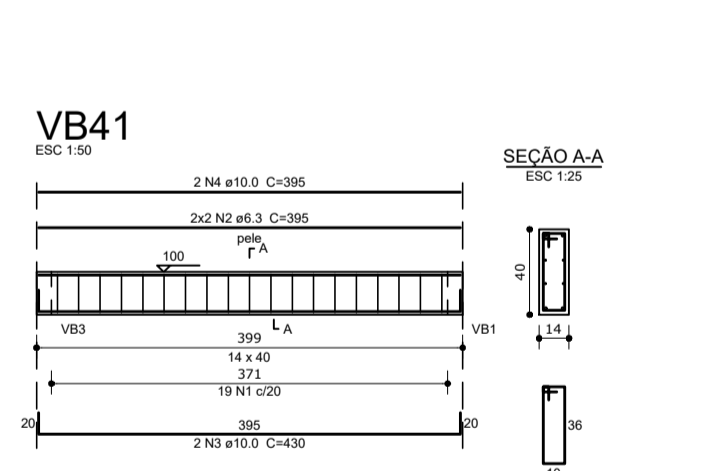
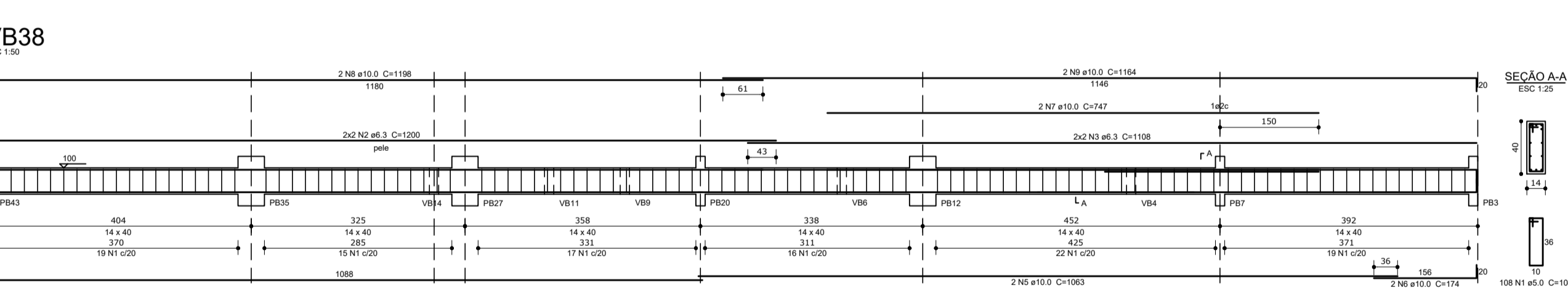
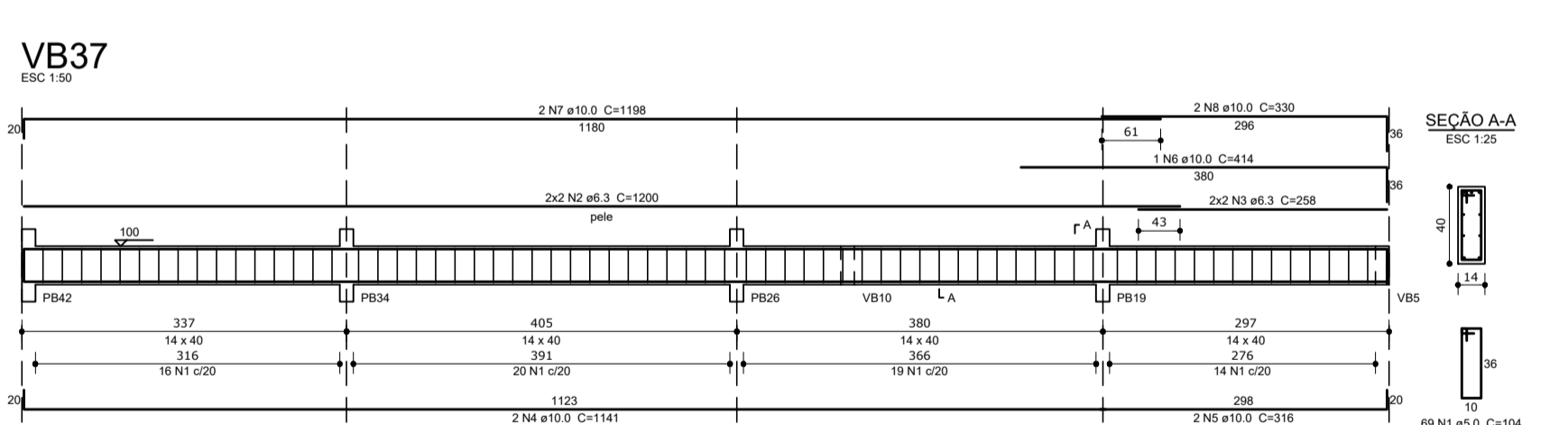
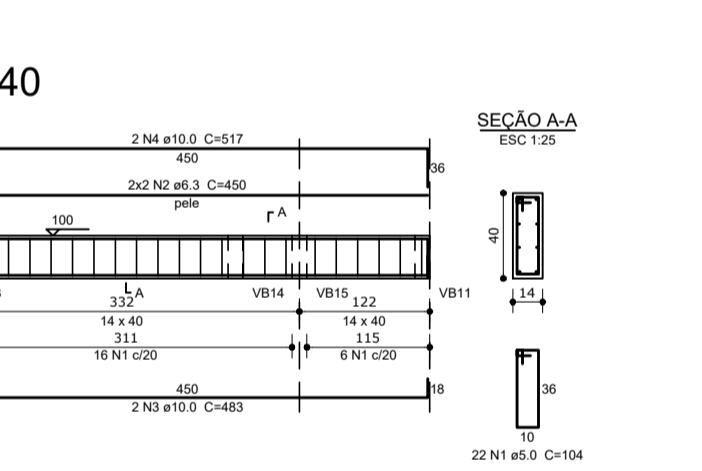
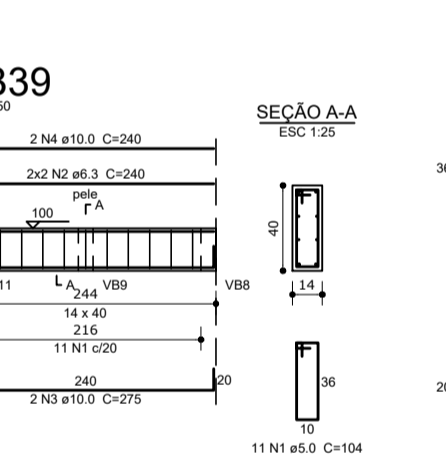
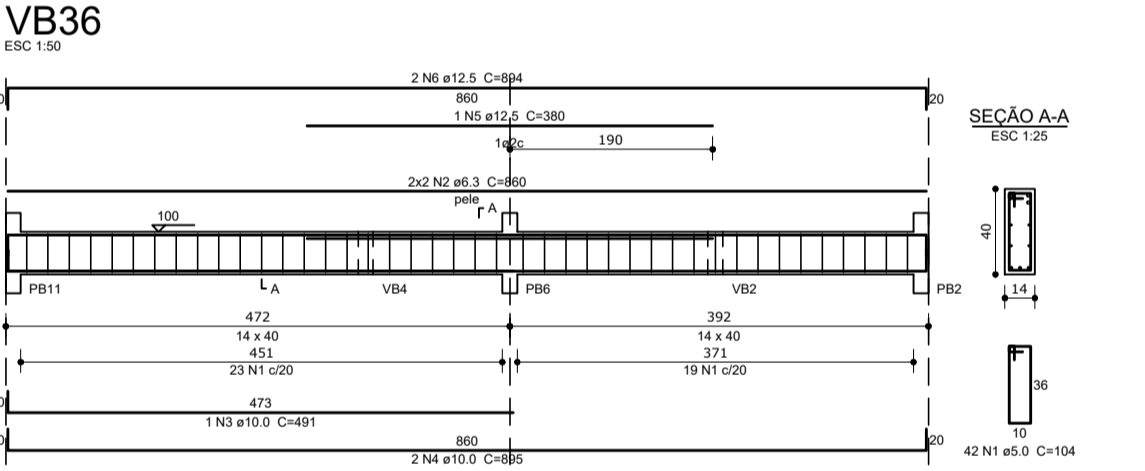
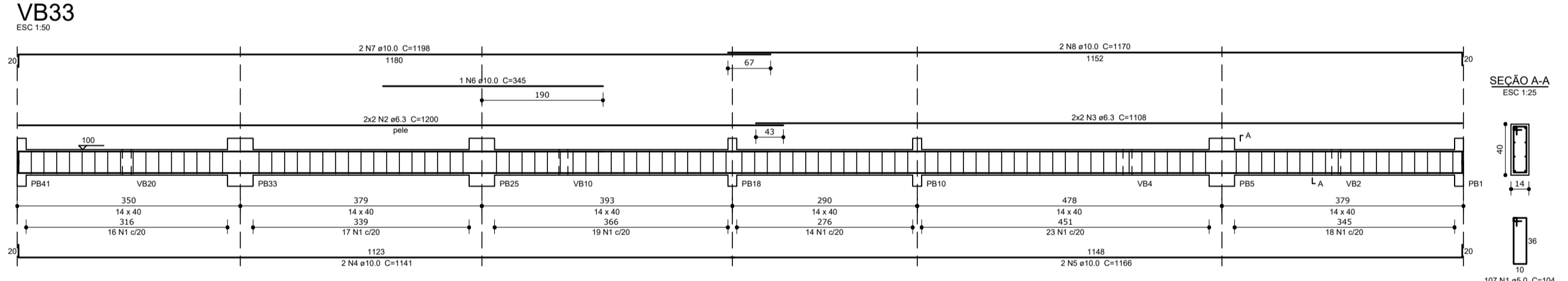
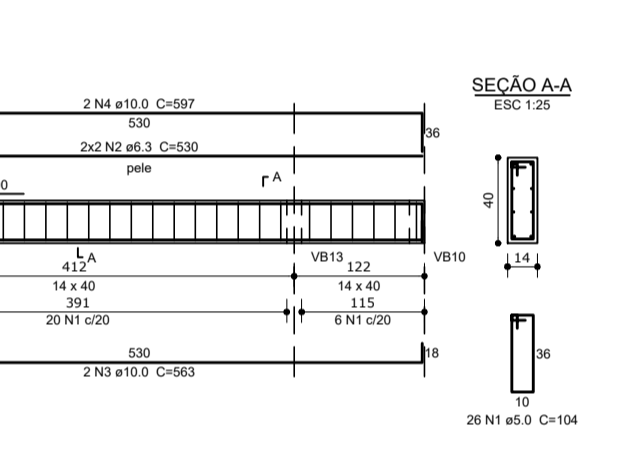
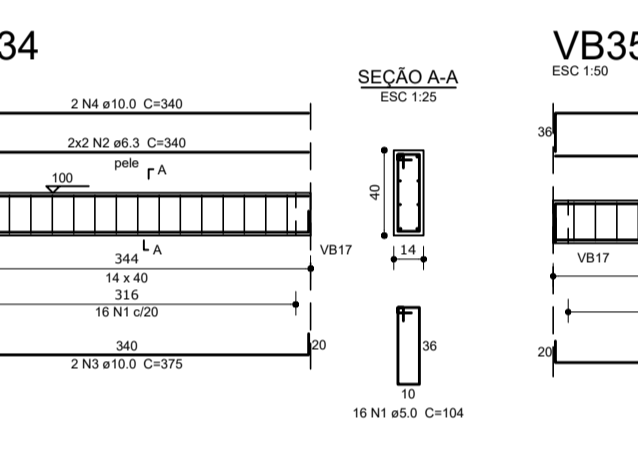
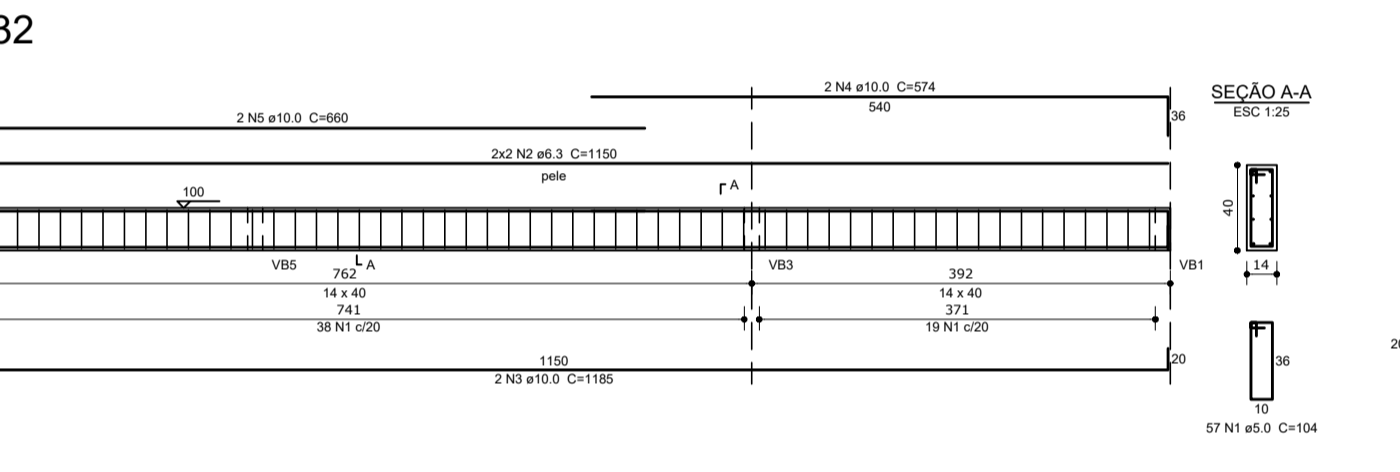
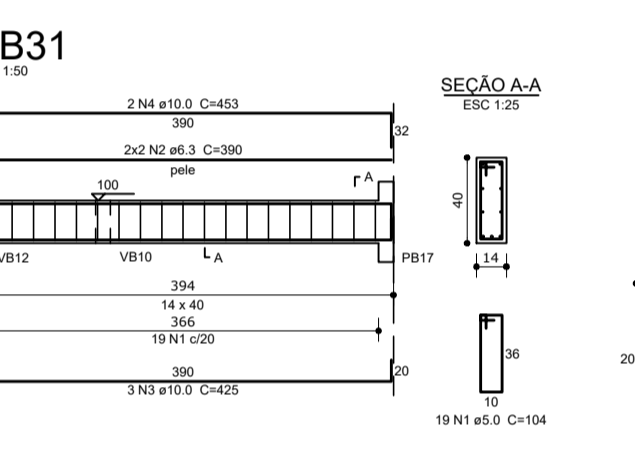
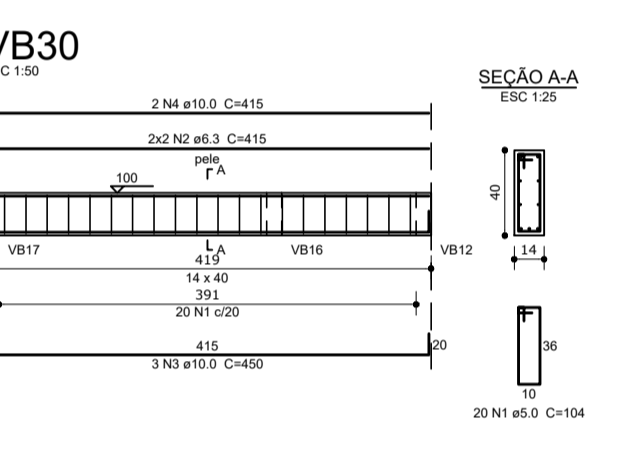
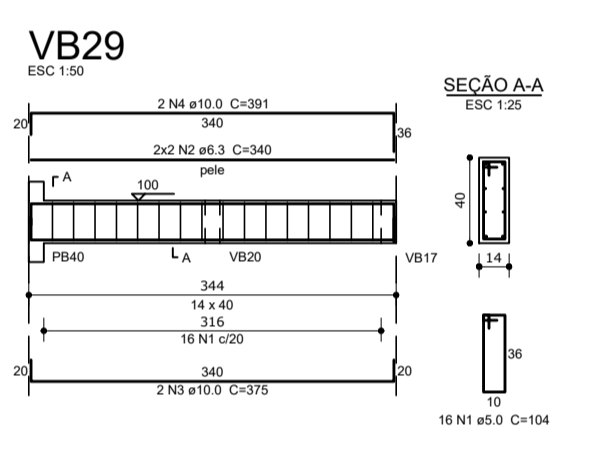
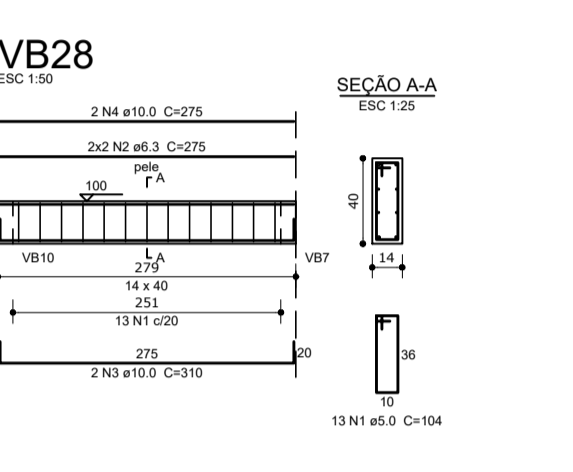
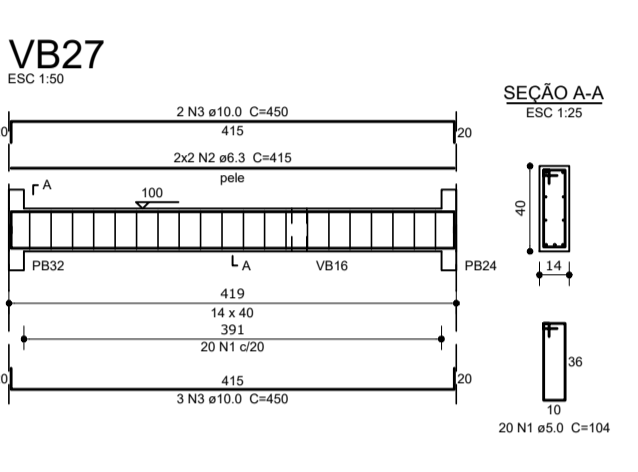
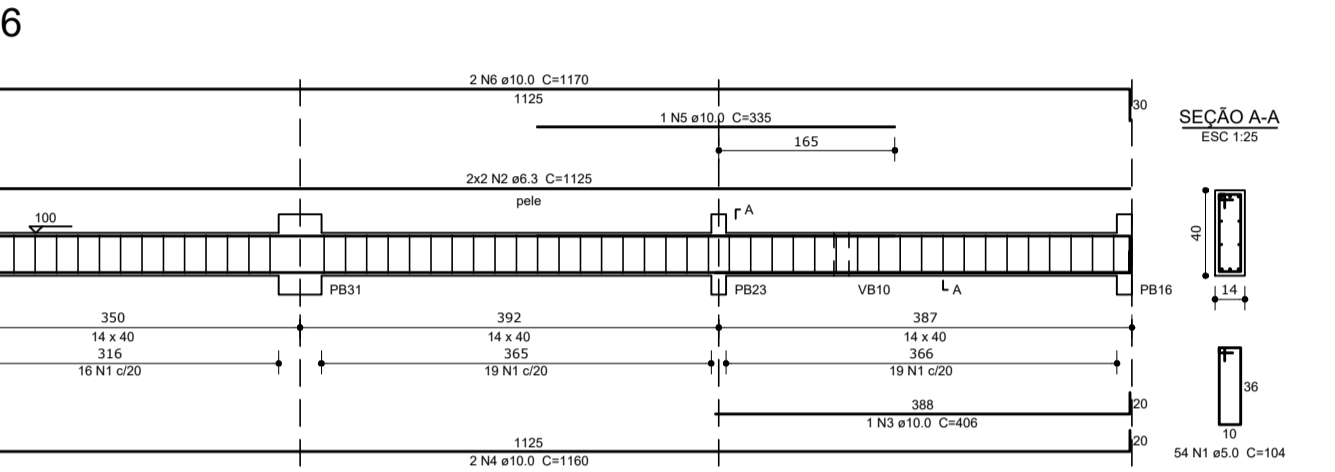
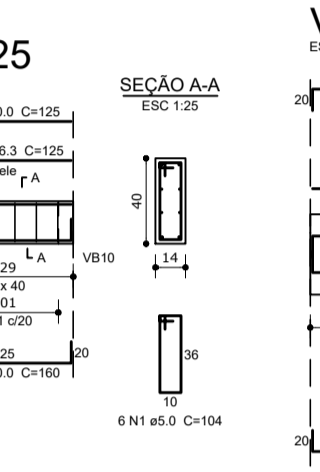
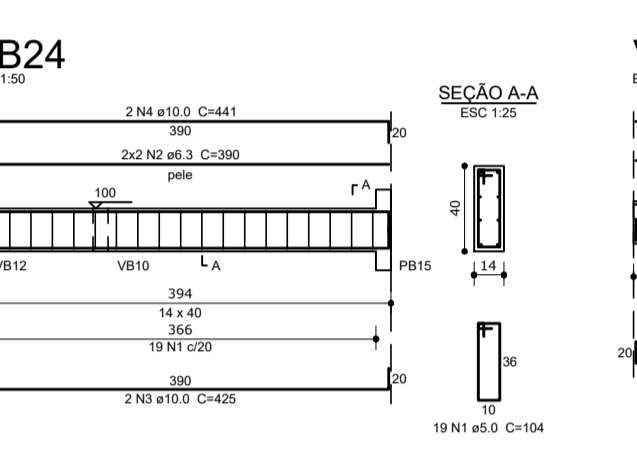
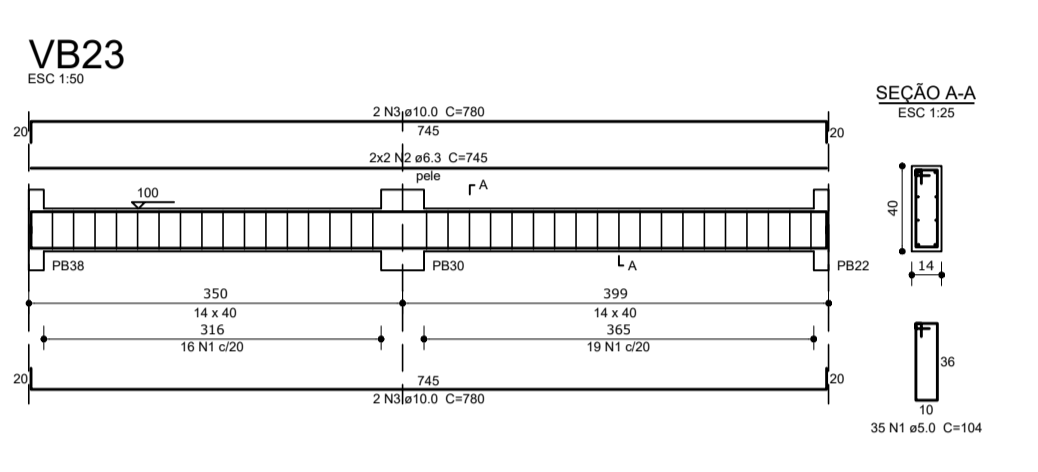
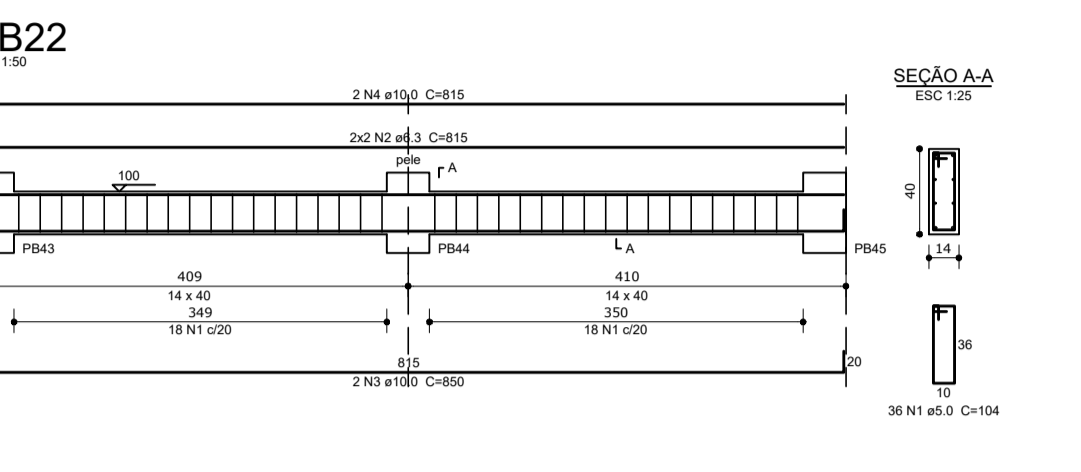
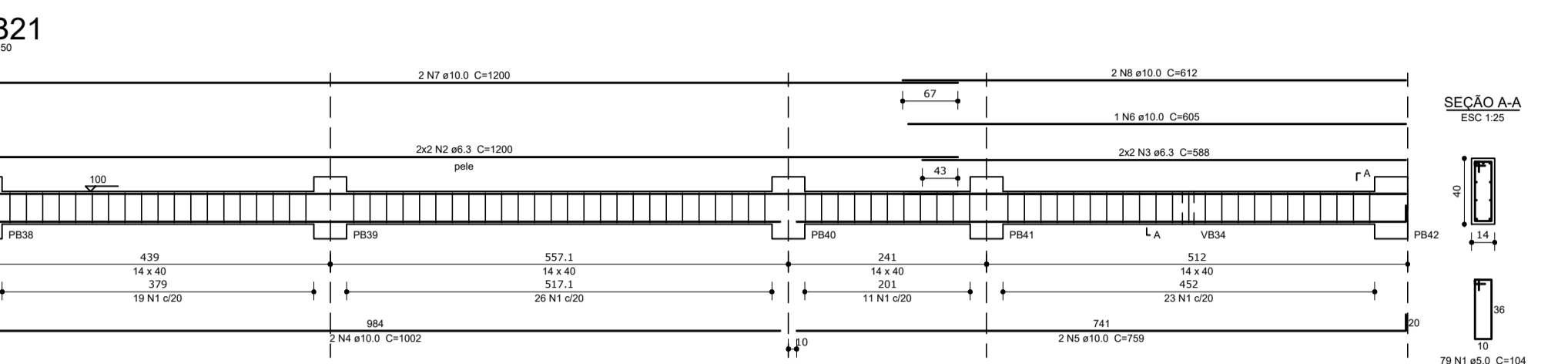
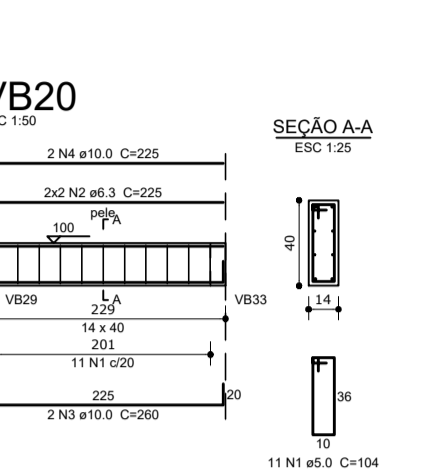
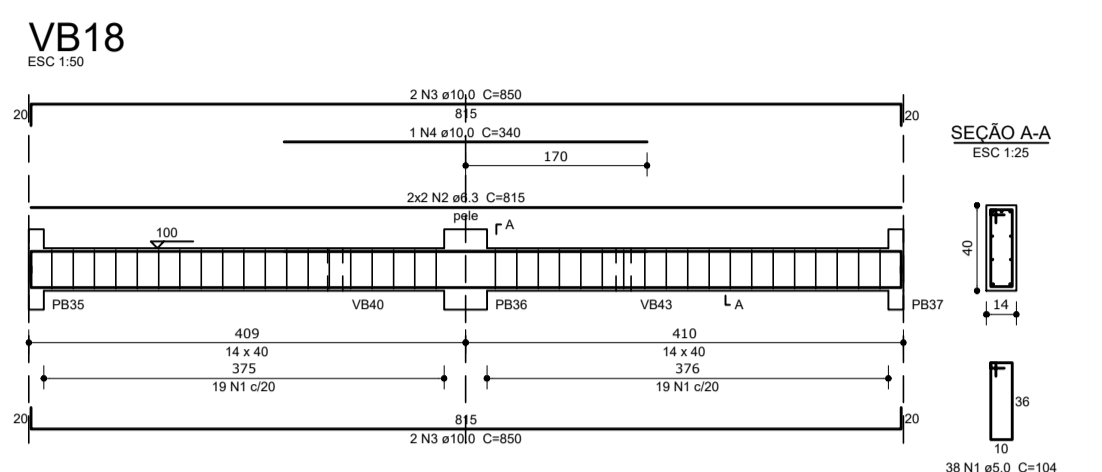
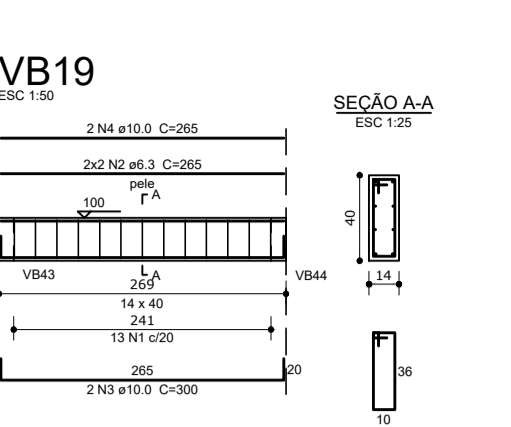
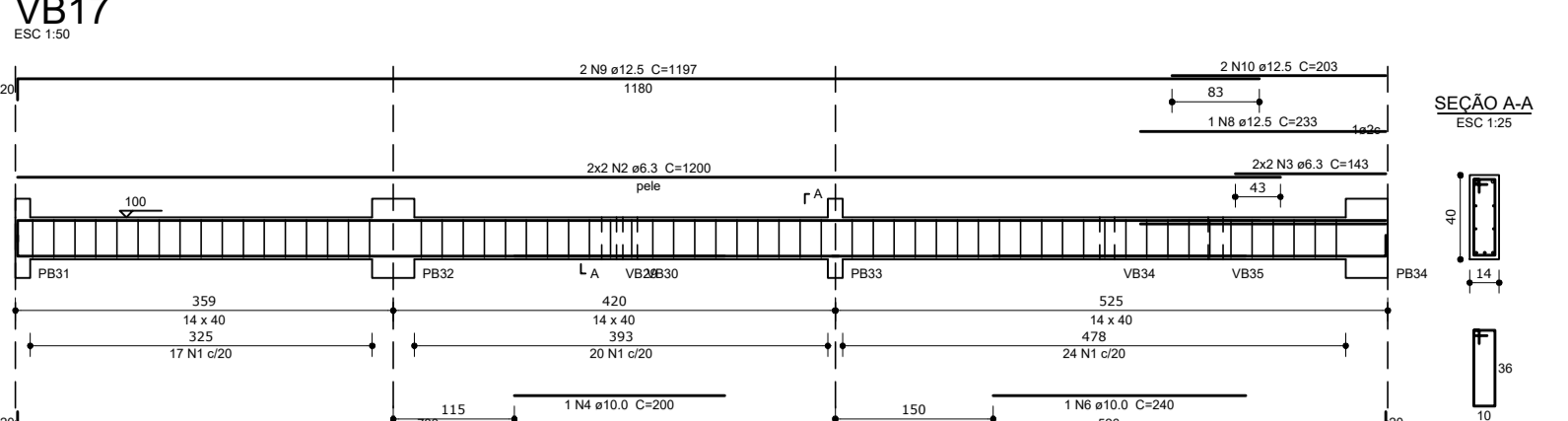
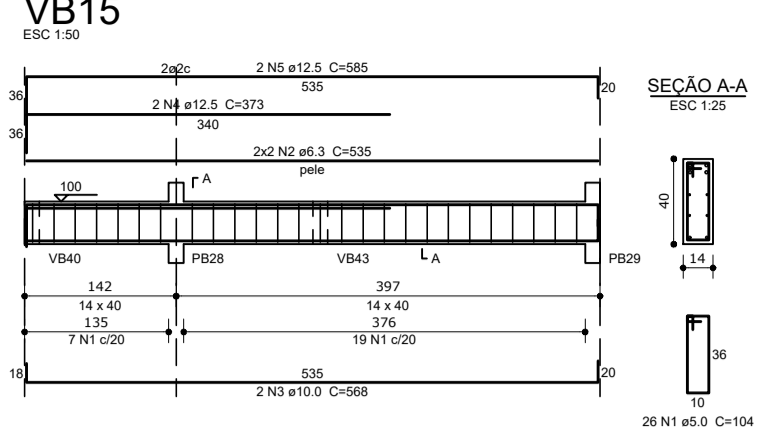
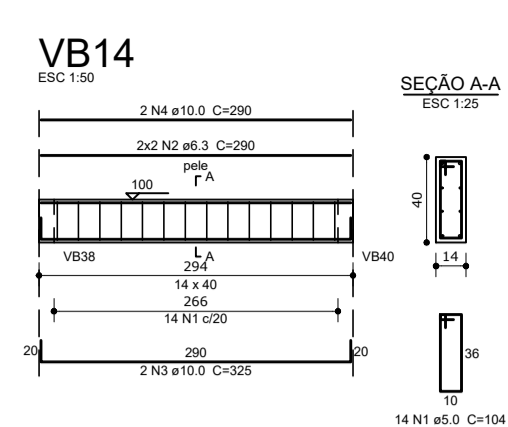
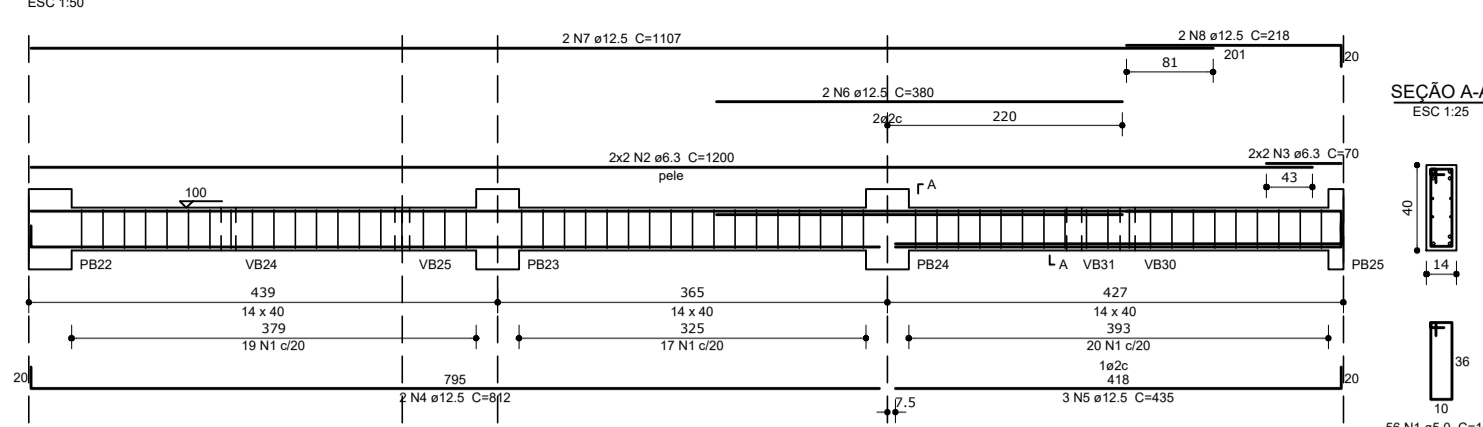


Table with columns: ELEMENTO, TIPO, QTD, DIMEN, QUANT, UNID, E TOTAL. Lists quantities for various beams and reinforcement.

Summary table (Resumo do aço) with columns: AÇO, DIMEN, E TOTAL, PREÇO. Lists steel quantities and prices.

Valores de concreto (C=20 e f=47) Área de barras (A\_s) em cm².

LEGENDA

NOTAS: 1. Manuseio e cura do concreto "in situ". 2. Condições padrão de execução. 3. Fôrmas e ferragens de aço.

REVISÕES table with columns: N, DATA, DESENHISTA, VERIFICAÇÃO, VISTO, DESCRIÇÃO, EMISSÃO FINAL.

DESENHOS DE REFERÊNCIA table with columns: DATA, REV, FORMATO, DESCRIÇÃO.

PROJECT INFORMATION table with columns: PROJETO, DATA, NOME, CREA, VISTO, ESCALA, 1:50/25.